



## Easy Installation!

- ▶ Ideal for installation on all solid or open roof designs and any Art Thatch™ Umbrella Kit (sold separately).
- ▶ Realistic, artificial reed thatch panels conform and adjust to any custom roof design.
- ▶ Install our Zulu Reed™ Top Cone (sold separately) on any custom roof peak.



## Zulu Reed™ Umbrella Thatch Panel

### Specifications

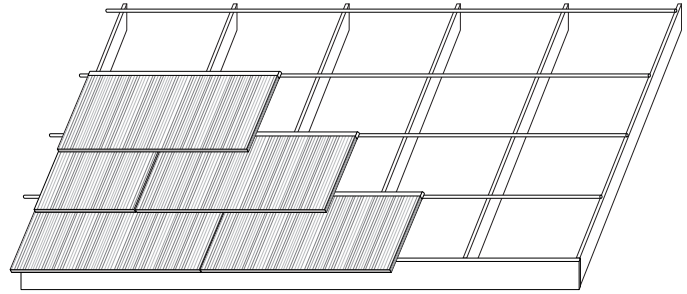
- Length: 32"
- Height: 18"
- Width: 1", 1.6", or 2"
- Coverage: 2.66 Sq. Ft.
- Center Installation: 12"
- 20 Year Limited Warranty
- Offered as both Class A fire rated and non-fire rated



# Zulu Reed™ Umbrella Thatch Panel Installation Tips

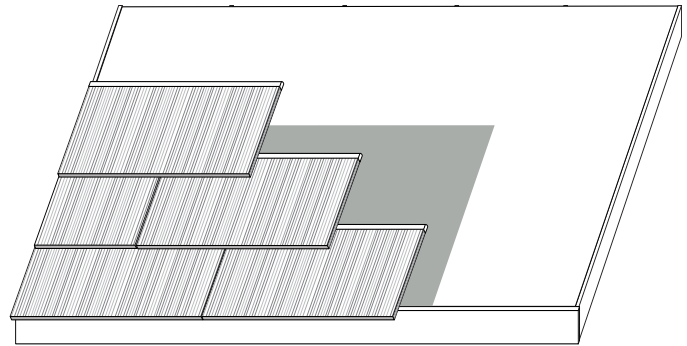
## Non Waterproof Installation

- Panels are visible from underneath.
- Best to use 30 degree roof pitch.
- Clip panels to 3/8" bar stock or custom wood supports.
- Panels should have an overhang at the bottom or eave of 8-12".
- Cut with razor knife or saw (hacksaw, jigsaw, sawzall) with an 18 TPI blade.
- When installed on an ArtThatch™ Umbrella frame, refer to the instructions included with the kit.



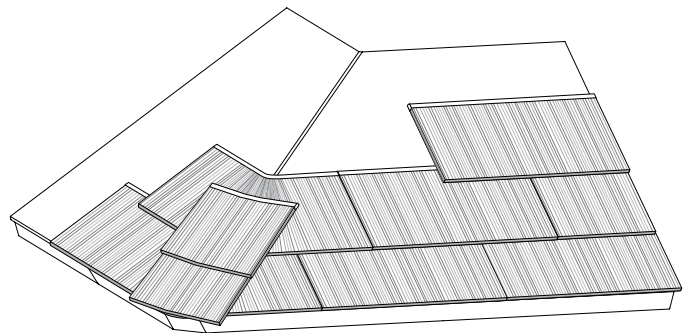
## Waterproof Installation

- On a solid roof, panels are not visible from underneath.
- Best to use 30 degree roof pitch.
- Use waterproof underlayment under panels.
- Remove clips and attach with galvanized or stainless screws, roofing nails or pneumatic staples.
- Panels should have an overhang at the bottom or eave of 8-12".
- Cut with razor knife or saw (hacksaw, jigsaw, sawzall) with an 18 TPI blade.



## Hip Installation

- Thatch panels will bend around a hip.
- Cut with razor knife or saw (hacksaw, jigsaw, sawzall) with an 18 TPI blade.
- Use panels cut in half to cover the hip line. Contact the manufacturer if assistance is required.
- Install our Zulu Reed™ Top Cone (sold separately) on any custom roof peak.



## Valley Installation

- Cut thatch panels at proper angle to fit tightly into the valley.
- Cut with razor knife or saw (hacksaw, jigsaw, sawzall) with an 18 TPI blade.

